

020

---

reassured

---



MANOR  
INTERIORS

AVANT  
homes

# 2020/21 kitchens

---



Are Avant Homes up to date...

When we agreed on the 09 (now 020) spec back in 2018/19 Home Decor made sure to research not only trends for 2019/20 but what the 'curve' would be for 2021/22. This includes all the new finishes from our largest supplier Egger, understanding what their intentions were for development, updates and discontinuations in the future, ensuring that any chosen finish would stand the test of time (for the lifespan of the 020 collection anyway).

It was a conscious effort to make sure each of the suggestions / recommendations to Avant Homes were not only achievable, but sustainable for the full duration of the 020 collection.

**The bespoke selection was, and still is a leading trend in the industry.**

Not only are Avant Homes on trend today with its mix of wood and material effects, but will be for the next couple of years...with others only being able to imitate!

**The next time Egger look to introduce any real newness to their current selection will be the back end of 2023!**



# Avant - Allure collection



**AVANT**  
homes



Frontal & work surface

**F187 ST9  
DARK CHICAGO  
CONCRETE**

Handle finishes

**DARK BRONZE**

**U708 ST9  
LIGHT GREY**  
Frontal & work surface

**H3133 ST12 TRUFFLE  
BROWN DAVOS OAK**

Frontal & work surface

# Avant - Vision collection



**AVANT**  
homes



Frontal & work surface

**F812 ST9 WHITE  
LEVANTO MARBLE**

**F629 ST16 BLACK GOLD  
METAL SLATE**

Frontal & work surface

Handle finishes  
**DARK BRONZE**

**U201 ST9  
PEBBLE GREY**

Frontal & work surface

# Avant - Ageless collection



**AVANT**  
homes



Frontal & work surface

**U960 ST9  
ONYX GREY**

**H1714 ST19  
LINCOLN WALNUT**  
Frontal & work surface

Handle finishes  
**DARK BRONZE**

**F812 ST9 WHITE  
LEVANTO MARBLE**  
Frontal & work surface

# Avant - Natural collection



**AVANT**  
homes



Frontal & work surface

**F629 ST16 BLACK  
GOLD METAL SLATE**

**H1377 ST36 SAND  
ORLEANS OAK**

Frontal & work surface

Handle finishes

**DARK BRONZE**

**U963 ST9  
DIAMOND GREY**  
Frontal & work surface

# Avant - Transcend collection



**AVANT**  
homes



Frontal & work surface

**F186 ST9 LIGHT GREY**  
**CHICAGO CONCRETE**

**F461 ST10 ANTHRACITE**  
**FABRIC METAL**

Frontal & work surface

Handle finishes  
**DARK BRONZE**

**U708 ST9**  
**LIGHT GREY**  
Frontal & work surface





# Be different

---



As we know the Covid-19 pandemic has made us all push the pause button across nearly all market genres - **but this is simply a pause, not a stop!**

The interior design market are still keeping up to date with material choices, colours and textures for future movements. However, this is predominantly dominated by how our homes, offices (and home offices) actually work with regards space design and all-round ergonomics.

As we have spent the most amount of time in our homes in recent months, where people have started to re-think their homes, looking to add their own individual style to suit their 'new' needs and desires. Something they never did before as time was never a luxury!

The O20 kitchen designs were created to be sympathetic to the Avant Homes decor, creating an alliance that unites the kitchen with the rest of the home.





Be different



# Be you

---



Avant Homes are already inspiring potential buyers with bold and individual designs via their show-homes and fitted products (kitchen and bedrooms included), giving perspective buyers the insight and courage to be different but more importantly to be themselves.

People don't want to just fit in anymore, but want to know they can add their own personal *twist* to any product and / or interior.

Taking on board what we now know, after what has been the largest change in modern history will of course be something all house builders will need to consider for future builds and their direction.

Avant Homes allows the future home owner to be themselves, not letting them just buy the bricks and mortar, but letting them express themselves and live the way they intend.

We are simply here to provide the right tools for the job!





Be you





# Best of both

---



The open plan space is still our most popular layout, a space that allows the whole family to come together after a day at the office or at school. Without warning last spring, millions of families found themselves working from home while their kids attempted to do schoolwork under the same roof. The changes happened so quickly that families (especially those short on space) could only make the best of it with hastily arranged solutions.

We all used to want a room with a view, now everybody's just searching for a room with a door.

Time with family and friends is extremely important, but as we work (and school) from home we also need our personal space. Managing that work/life balance is just as important as managing space.

---

**More than one in ten want a new kitchen. With more people working remotely, a further one in ten also said they want to create a home office.**

[weareunhooked.com/research-how-lockdown-has-impacted-the-home-interiors-industry/](https://weareunhooked.com/research-how-lockdown-has-impacted-the-home-interiors-industry/)

**Two-fifths of Britons would now prioritise space for home office if they were searching for a new property.**

<https://www.thisismoney.co.uk/>

**We now understand the need for having a dedicated space with boundaries to achieve deep work.**

Dwell- How the Pandemic Is Reshaping Interior Design So Far



# Broken-plan living

---



From the data and coverage we have seen over the past few months, it has started to highlight the desire (possibly even need) for a more flexibility and modular home. Giving us the collective family time we buy a home for, but to also allow for some personal space that may offer needed peace and quiet!

We were always heading for a more flexible 'working from home' utopianism, but with the recent pandemic, this has fast tracked this some what. It has highlighted that we are capable of the same work productivity, but has equally highlighted the need for a better work / family balance.

The open plan home needs to allow the user to freely adapt their space, creating more flexible working environment, as and when is needed.





# What's next



## Added block colours -

To focus more on personalities, individualism and daringness. Saturated tones that compliment current natural material effects



## Personal space -

Effortless furniture to allow an open space to be broken up with ease. Creating temporary break out zones that allows for personal space and time.



## Flexible furniture -

That can be positioned and used to suit owners and space and needs. Changing a rooms use with a simple repositioning of furniture.



## Feature flooring -

Creating a design that doesn't stop at the floor, but continues onto it. Flooring that not only compliments, but will also match the kitchen finish itself.

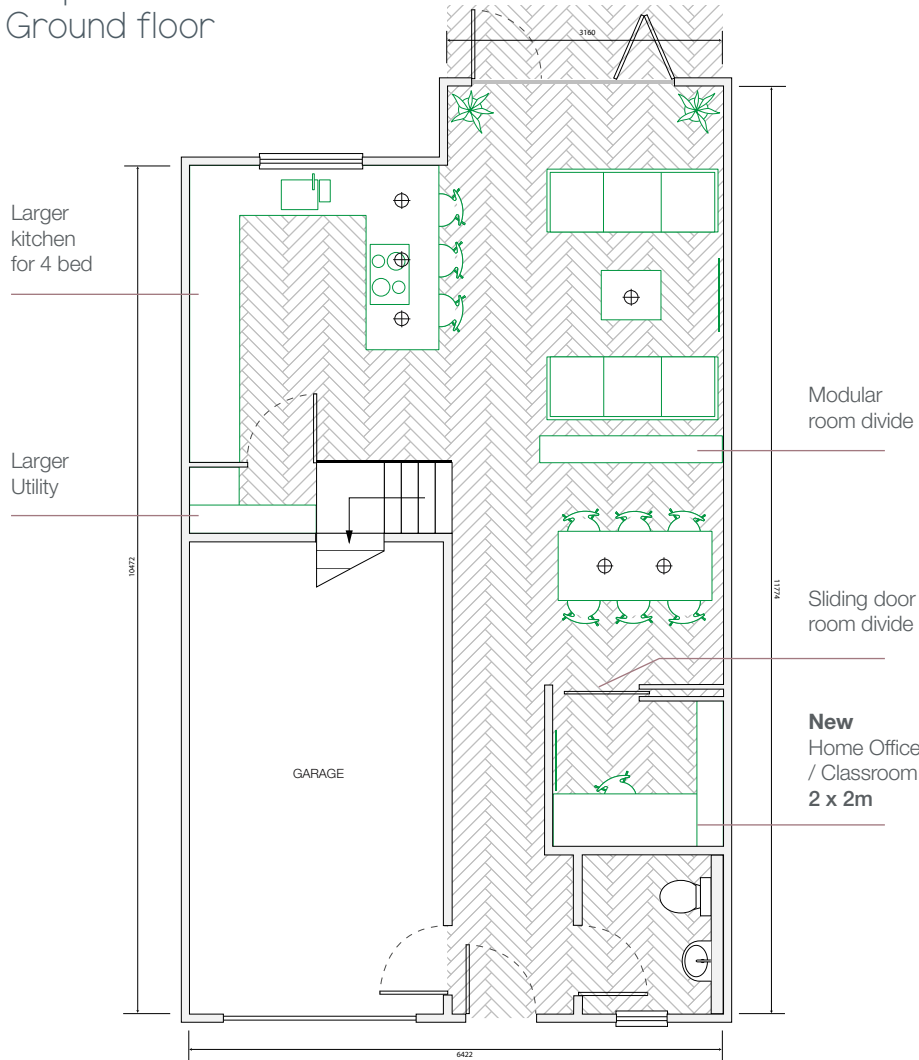
# Future homes



Current Ground floor



Proposed Ground floor

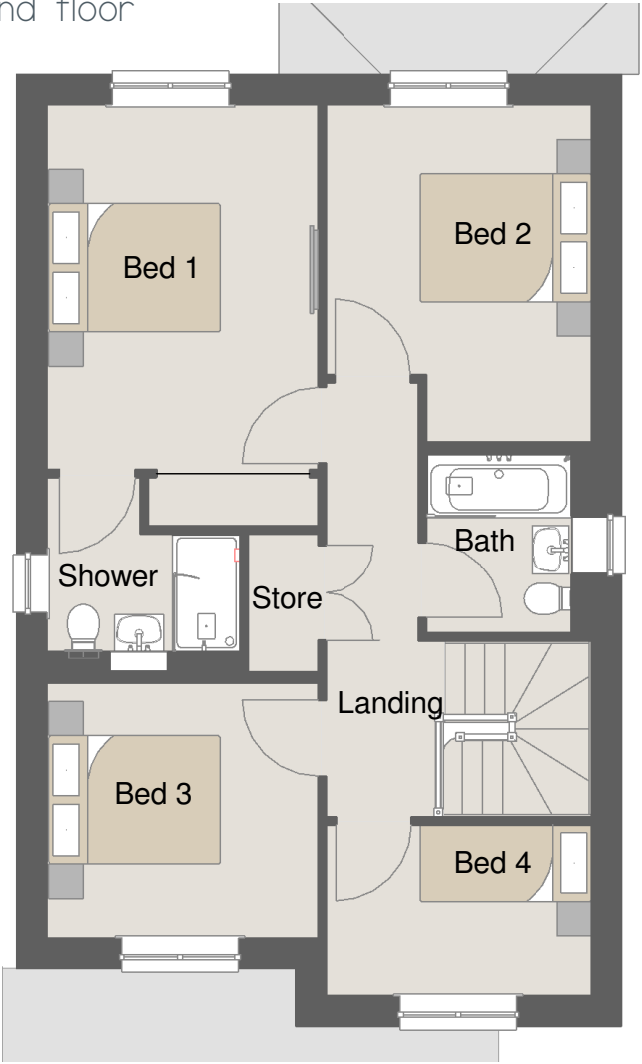


Holbury house type

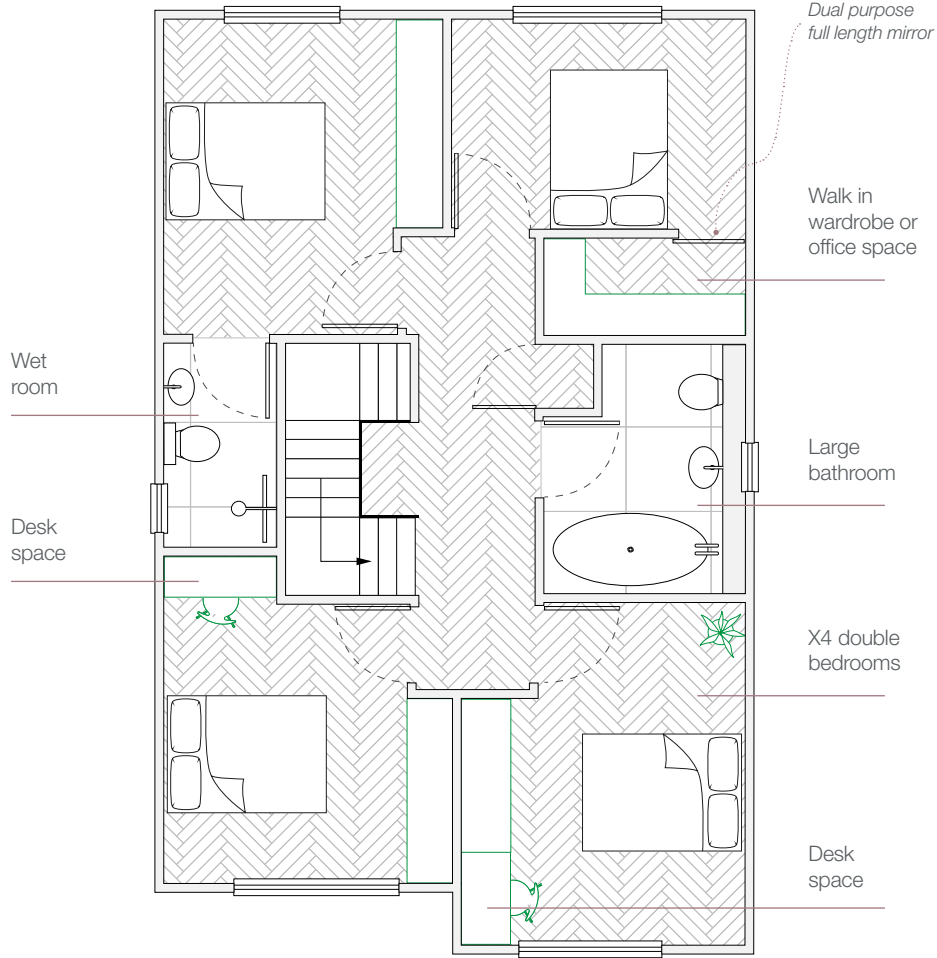
# Future homes



Current  
Ground floor



Proposed  
Ground floor



Holbury house type

Proposed ground floor visual

Holbury house type

